

4MP POE PTZ IP Camera

P: 300°, T: 90° Dome Mini Camera



4MP



POE



IP66



PTZ



Dual Light



Humanoid
Detection

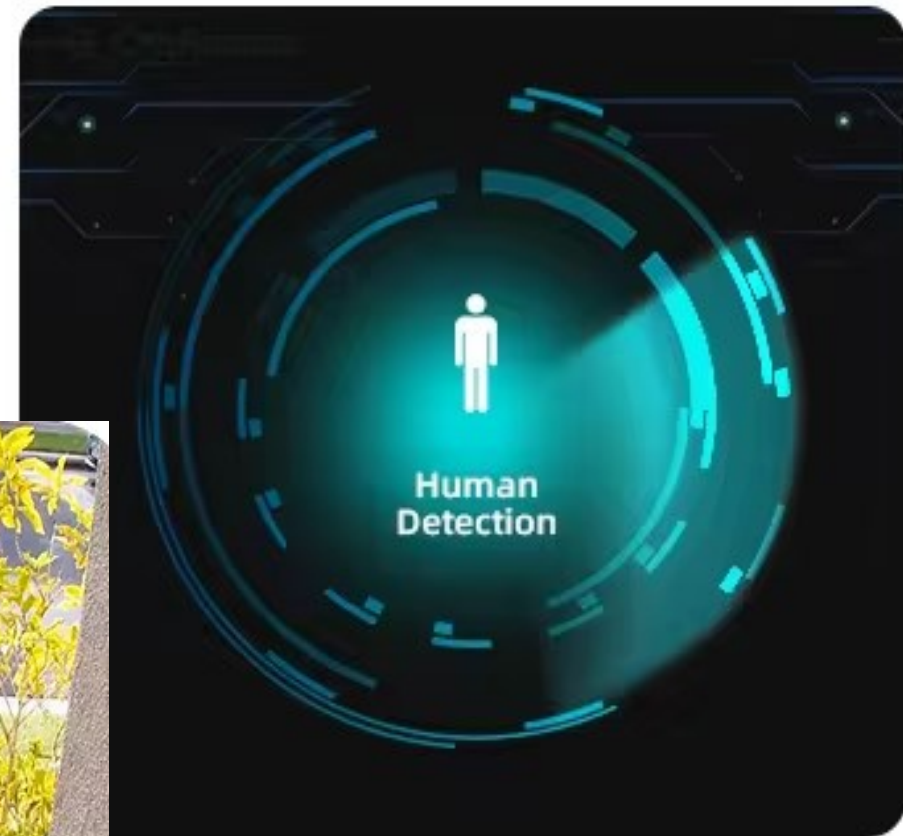
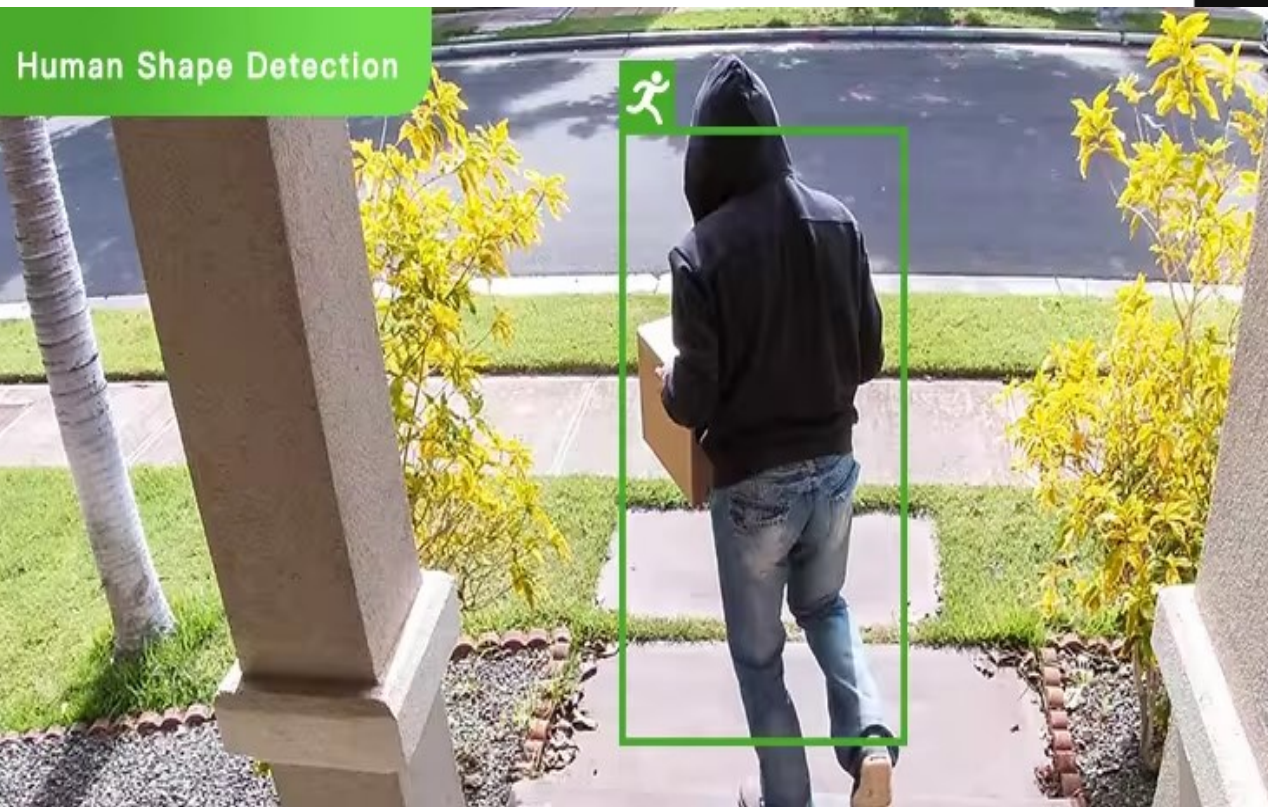


TF Card
Slot



Two-way
Audio

DIGIRAIN AI Camera can intelligently filter objects to focus on human and vehicle detection, which greatly enhances the monitoring efficiency and benefits the large population related industries such as public security, access con-



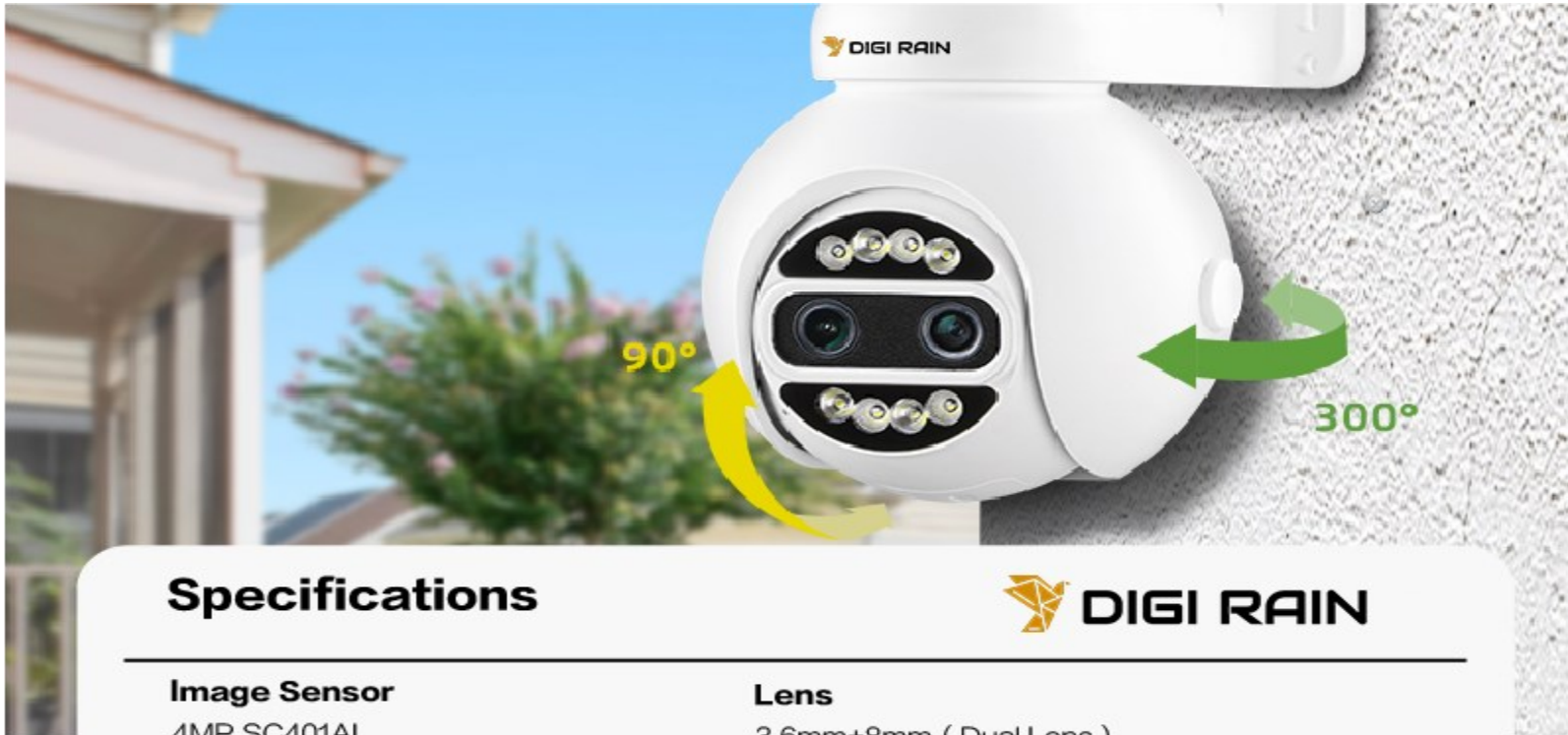
Smart Motion Detection

The Smart Motion Detection function enables the user to monitor specified area clearly in a timely manner. When there is motion detected in a target area, **DIGIRAIN** Camera will give an alerts by email /APP Push for the objects automatically.



Pan & Tilt Setting

With a sophisticated pan/tilt mechanism, **DIGIRAIN** PTZ Camera provides fast, precise movement with 300° pan and 90° tilt. The Control Speed is 0.01°~15° /S.



Specifications

**Image Sensor**

4MP,SC401AI

Lens

3.6mm+8mm (Dual Lens)

Material

Metal

IR Leds

8PCS Dual light source

Waterproof Level

IP66

Protocol

RTSP / Onvif

Operating Temperature

-40°C - 60°C

APP

ICSee

TF Card Slot

Max 128G

Audio Standard

G711-u / G711-a

POE

IEEE802.3at

Based on the fixed lens to zoom composite technology, Gcraftsman successfully converts two fixed lenses built-in a same camera body into a zoom camera with 8X varifocal length. When users zoom in or out, it exactly looks like a real zoom camera, smoothly and clearly display the near & distant objects. Especially the cost of this binocular camera is much lower than the traditional zoom cameras.



Built-in microphone & speaker allow you to listen and talk to whoever the camera catches in real time clearly, **DIGIRAIN** advanced echo canceller technology is able to transmit HQ sounds without noise



Dual Light Alarm Flash

The IR LEDs technology has been upgraded to dual light source. 8pcs dual light Array can display a sharp B&W image at night, However it can also display a colorful night vision image based on AI function triggered or Light mode selected manually.



Dual Light Night Vision

Gcraftsman AI camera alarm function is triggered at once. The dual light will be flashing



IR Night Vision



Full Color

F1.6 Large Apertures

DIGIRAIN adopts HD CMOS Starvis Sensor, which is able to deliver high detailed color images even in the low light environments reaching 0.01Lux (Color) or 0Lux (B/W), and near infrared light environments without any supplementary lighting.



IP66 Waterproof

Supporting IP66-rated weather-proof and lightning protection, which are the leading level of the industry, the **DIGIRAIN** Network Camera is well protected against rainy and foggy weather to ensure the performance.



Unique Structure Design

Aluminum alloy housing has a good effects on anti-surfing and anti-corrosion, which is suitable for all kinds of extreme climatic conditions. Also, Cable with shielding layer and twined lines effectively shields interference and transmit stable signals.

